

SMART

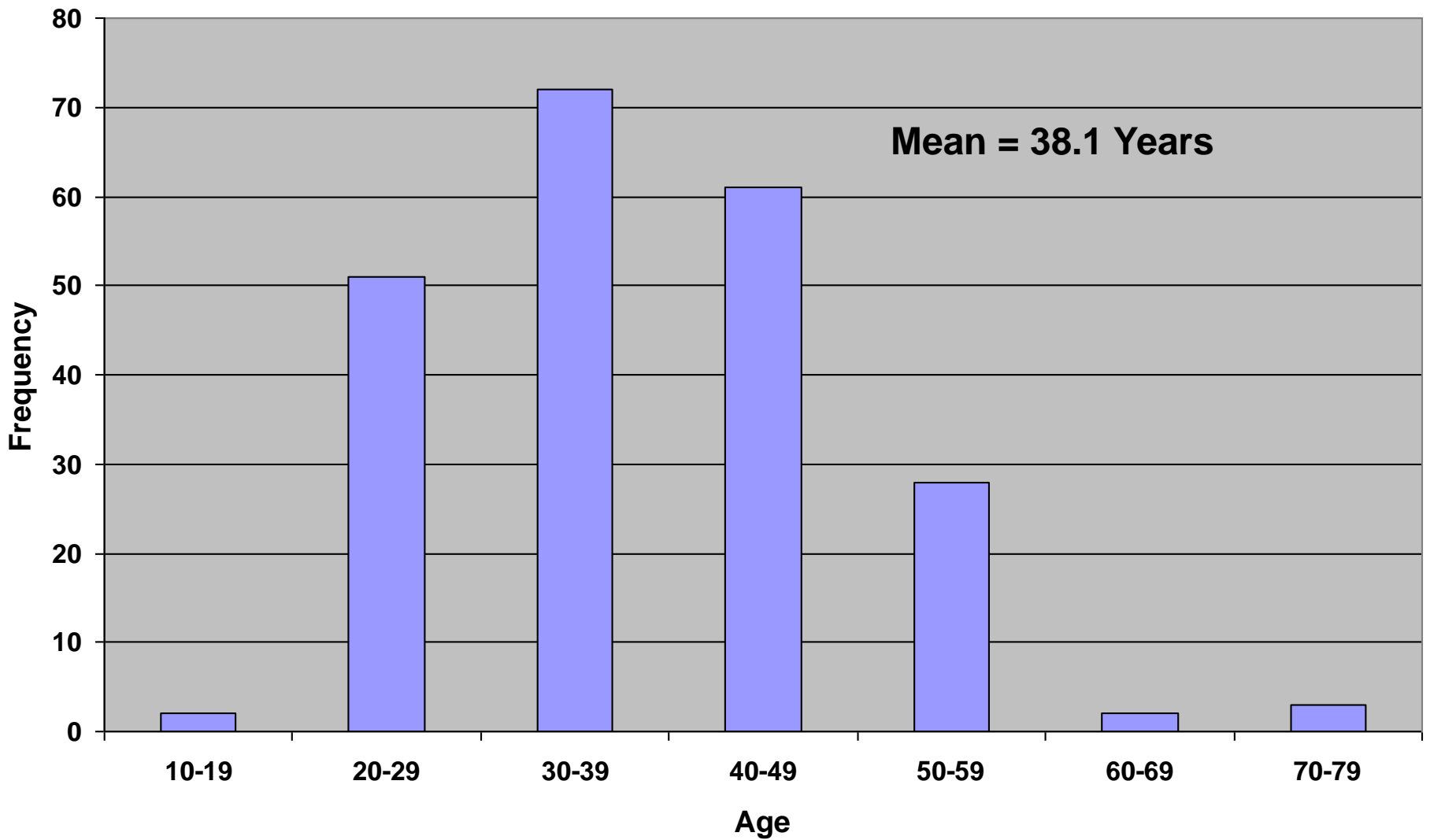
Reentry Sample
Survey Information
Presentation

Descriptive Information

- 222 Surveys
 - Gender
 - 76% Males
 - 21% Females
 - Race/Ethnicity
 - 48% African American
 - 29% Caucasian
 - 11% Hispanic
 - 6% Bi-Racial
 - 6% Other or Unreported
 - 55 Sex Offenders
 - 9 Veterans
 - 89% Spoke English

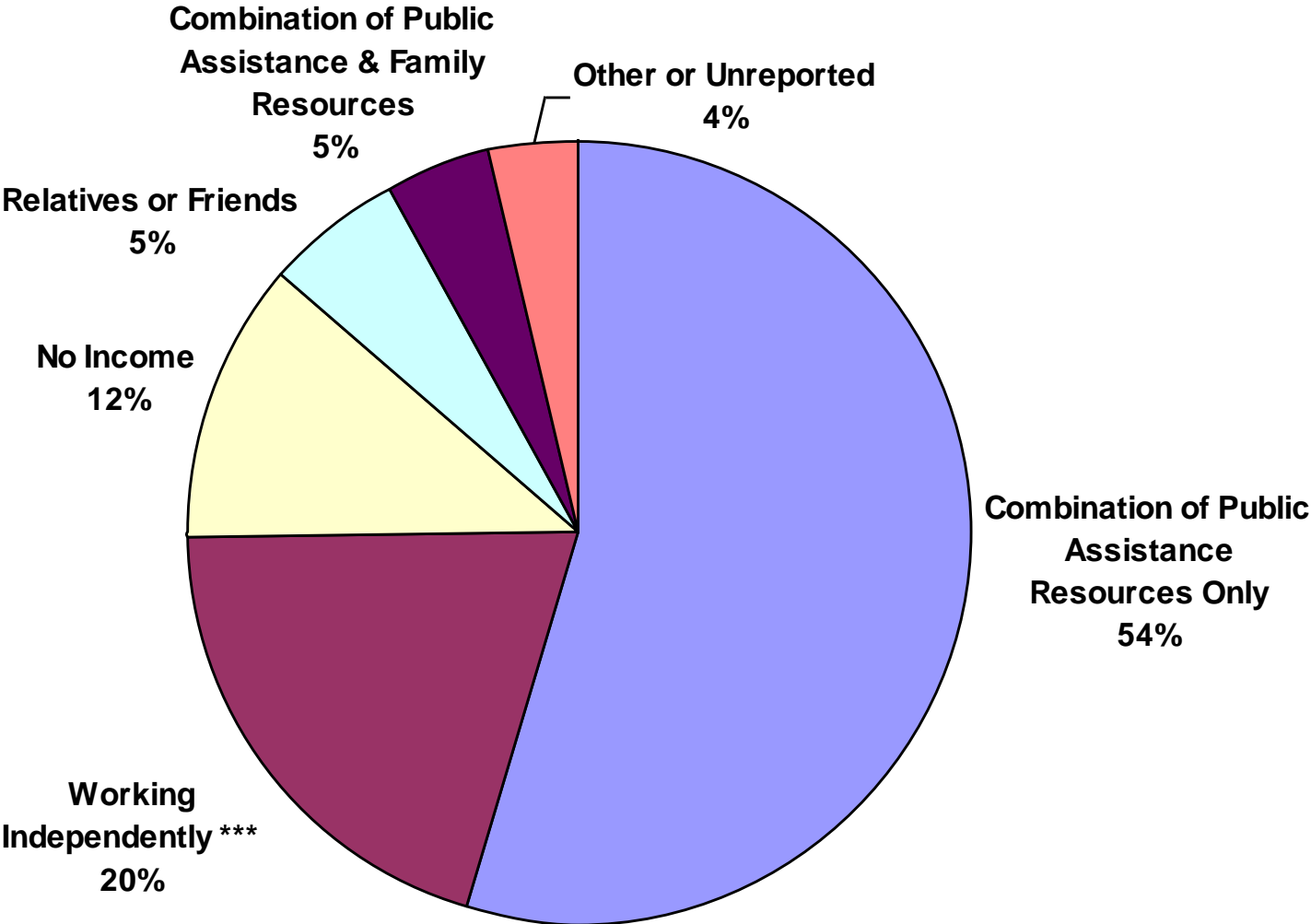
Age Distribution of SMART Reentry Sample

N = 219



Sources of Income for the SMART Reentry Sample

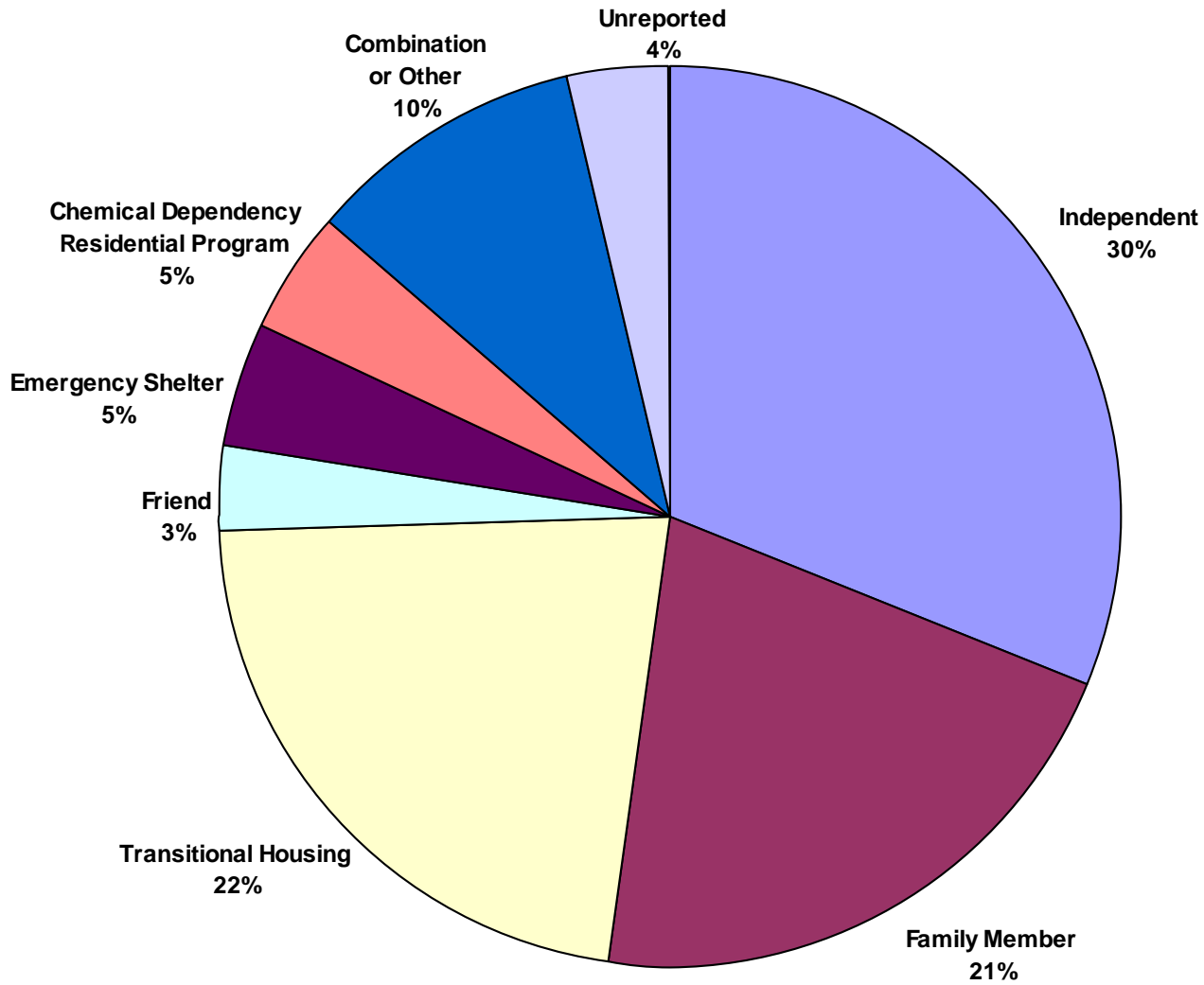
N = 222



***Denotes the inclusion of 4 respondents who work independently and receive government aid

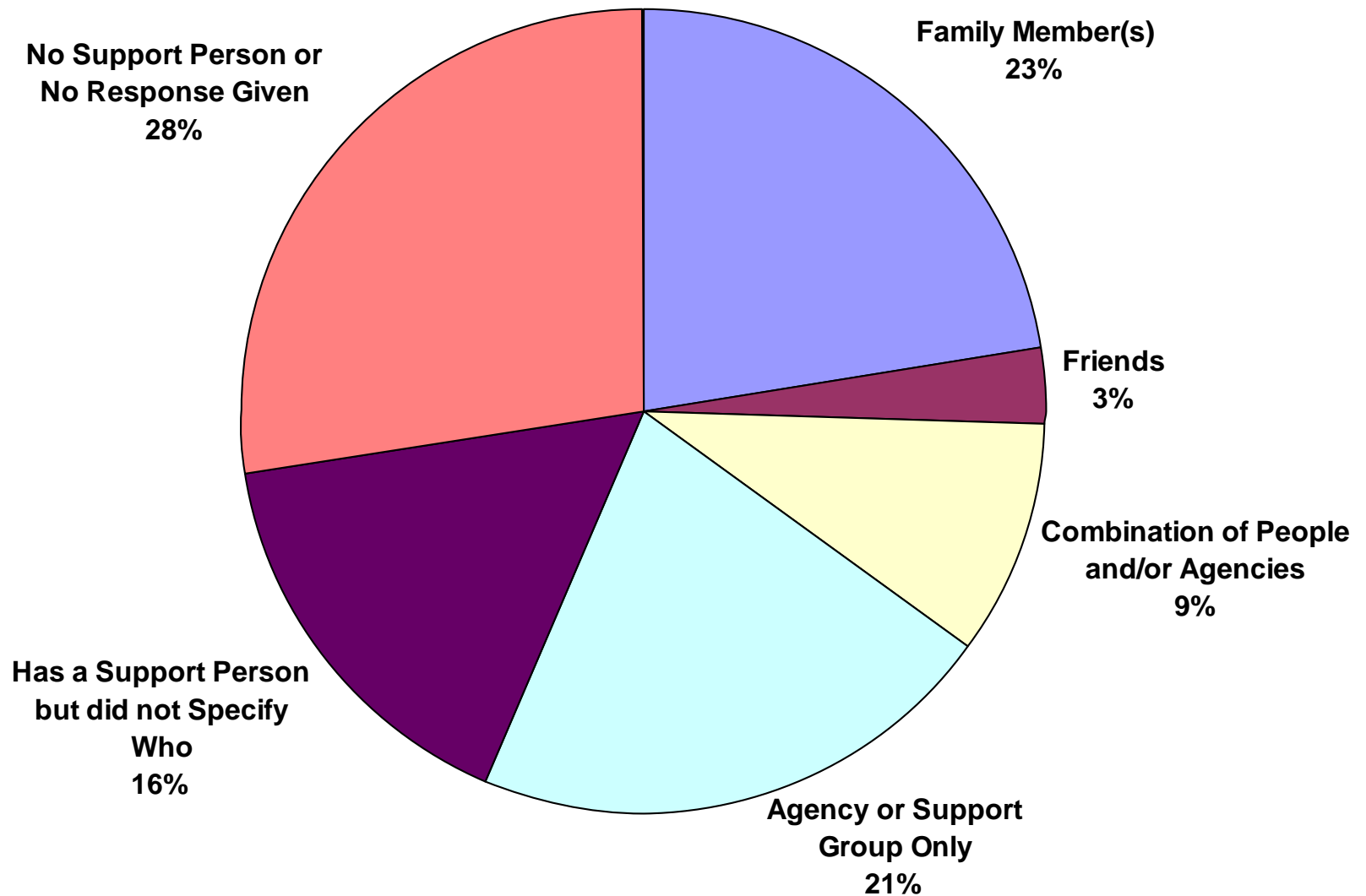
Living Situations for the SMART Reentry Sample

N = 222



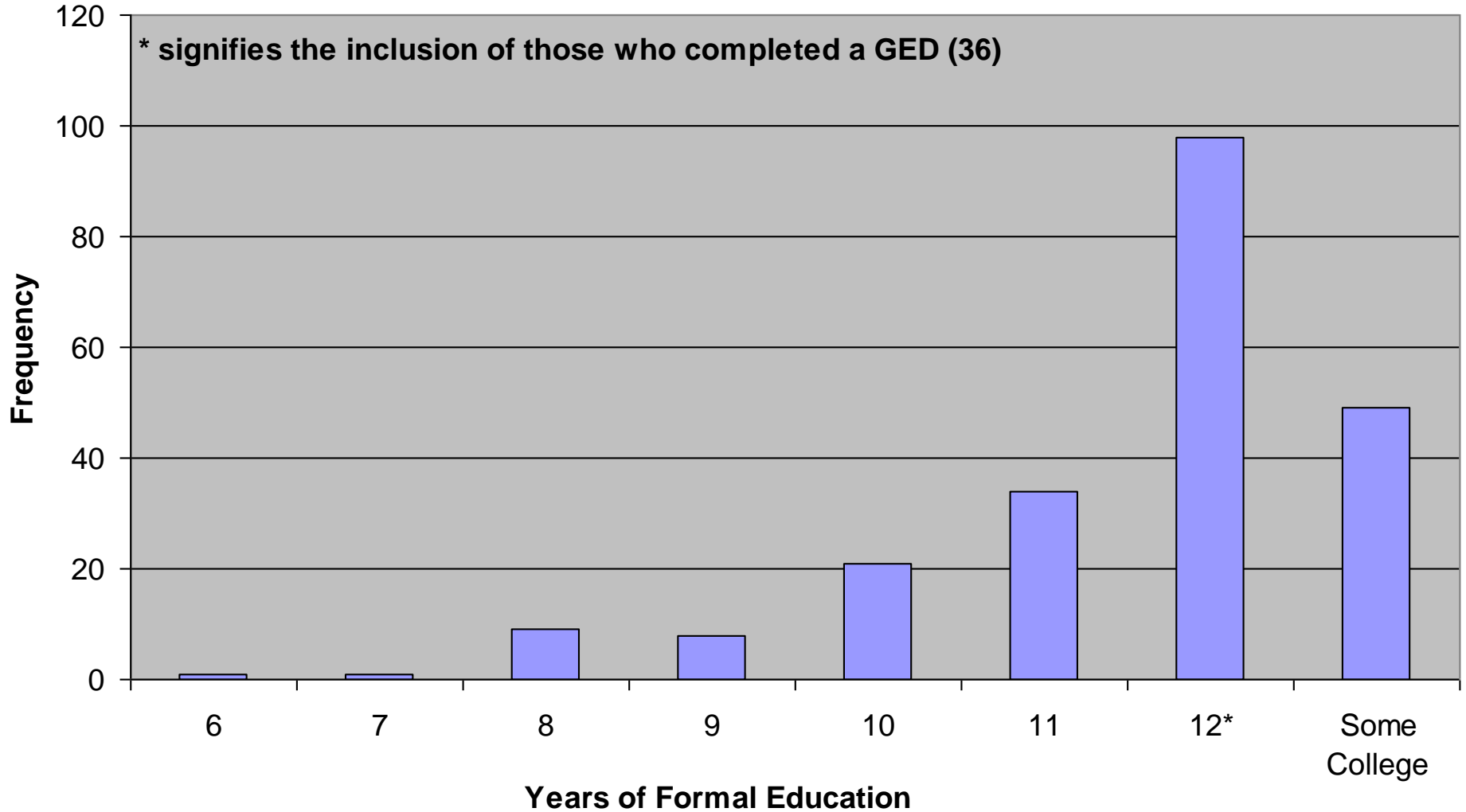
Listed Support Person(s) for SMART Reentry Sample

N = 222



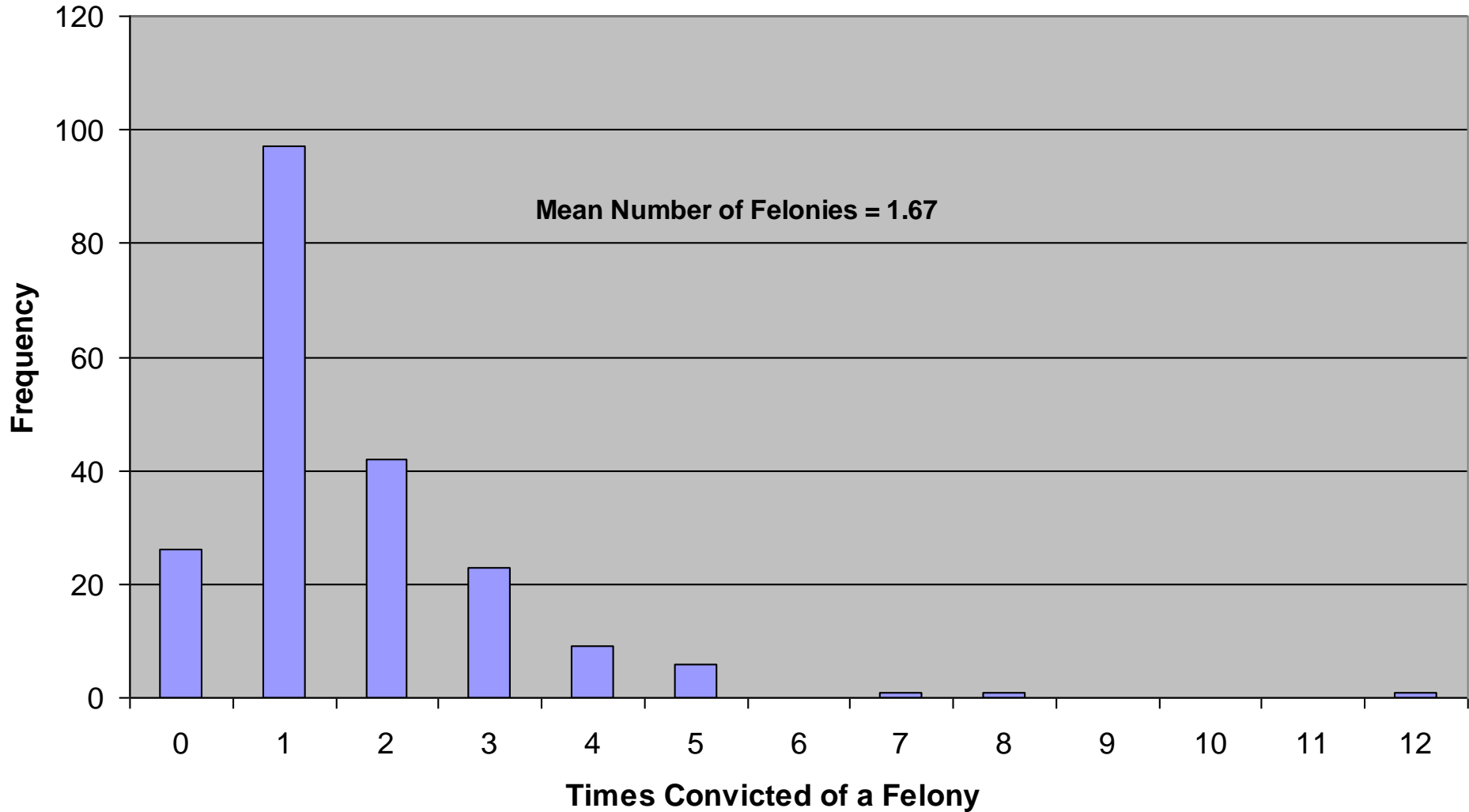
Educational Attainment of SMART Reentry Sample

N = 211

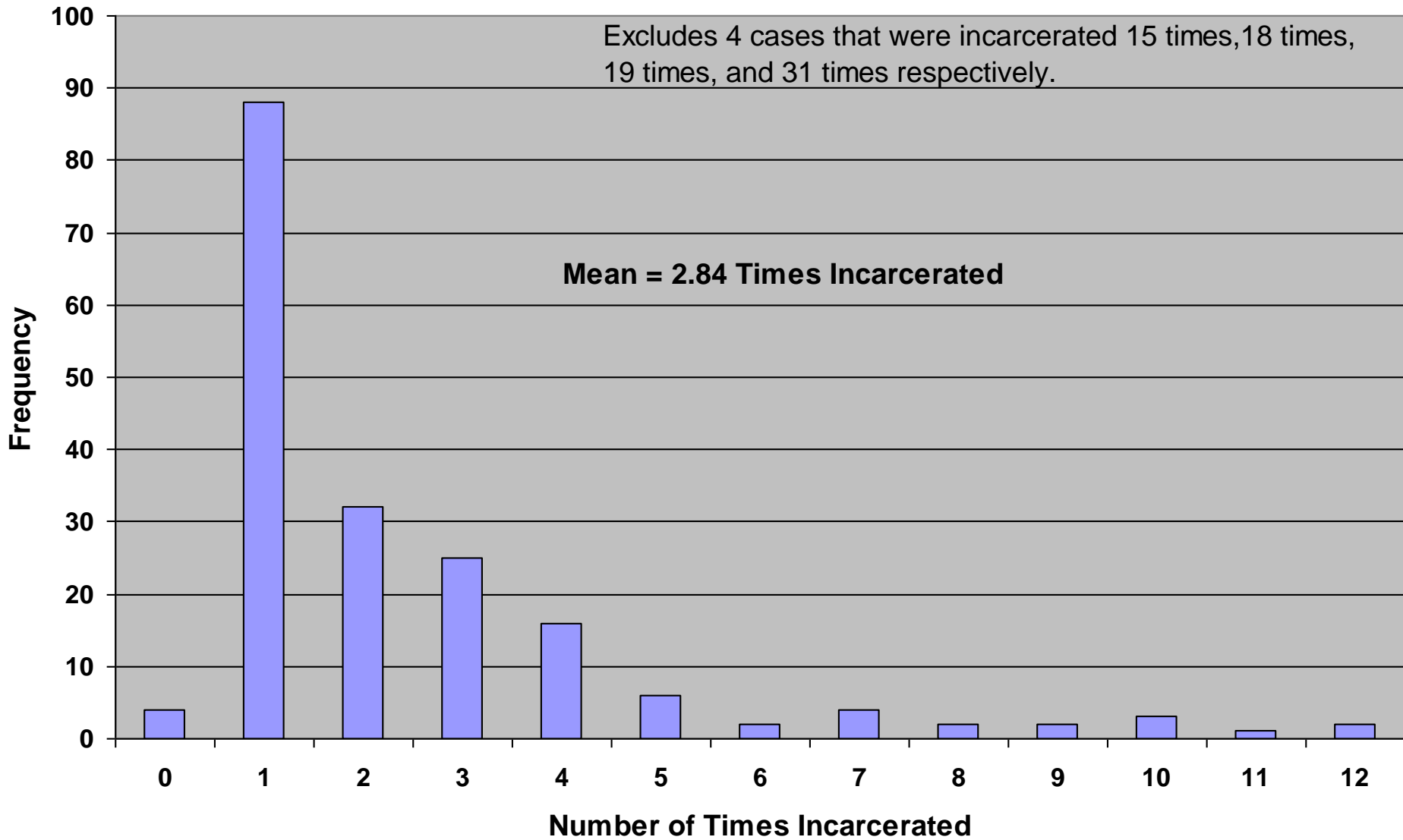


Felonious Criminal History of SMART Reentry Sample

N = 206

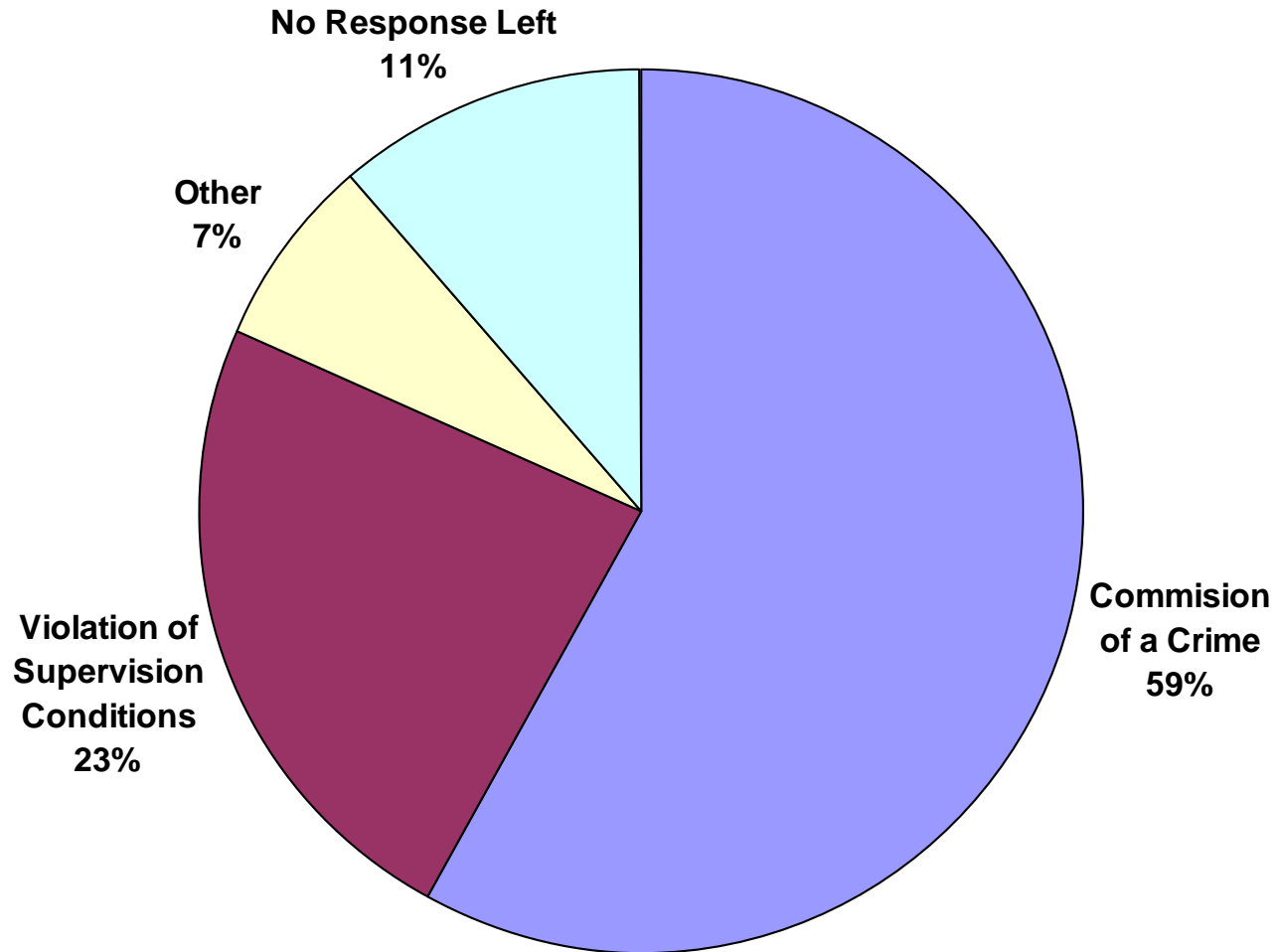


Number of Times Incarcerated for SMART Reentry Sample N = 191



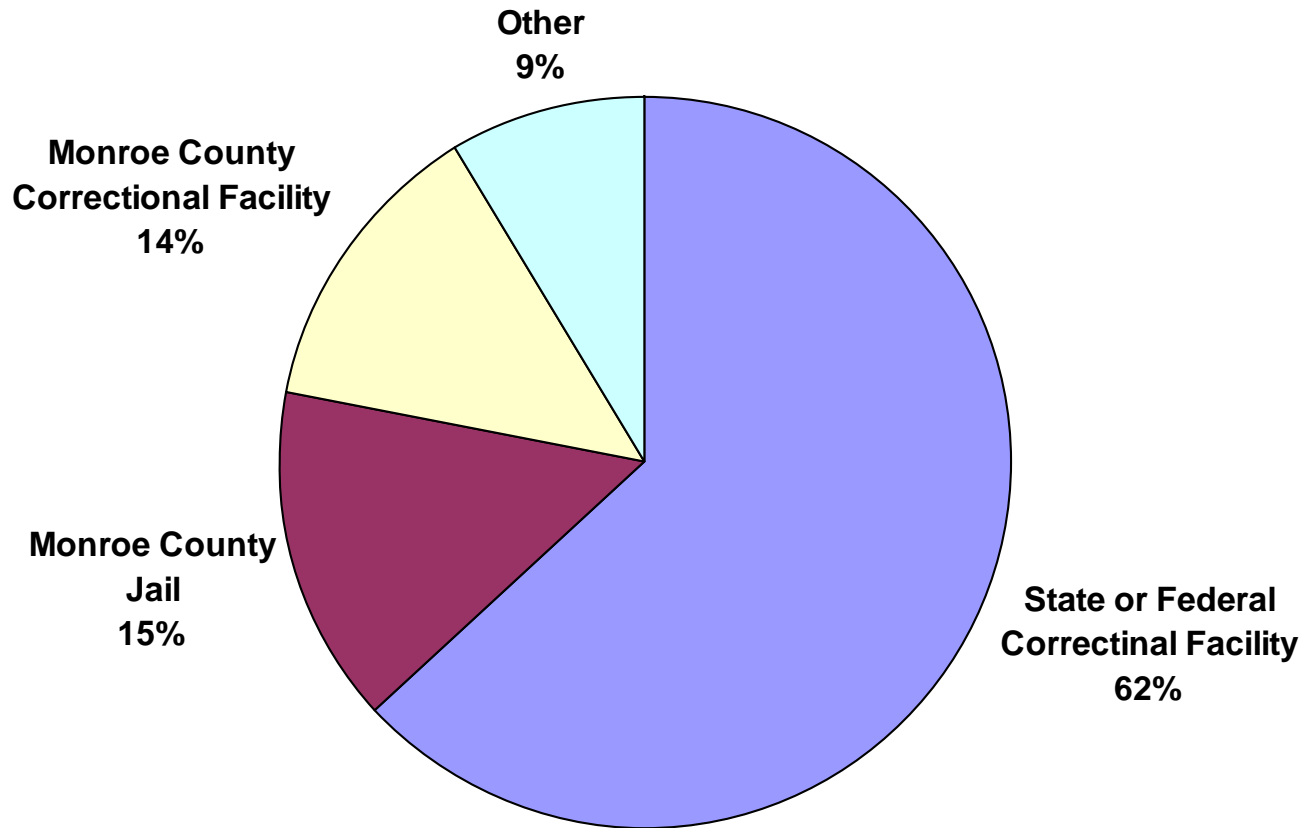
Last Court Sentence for SMART Reentry Sample

N = 222



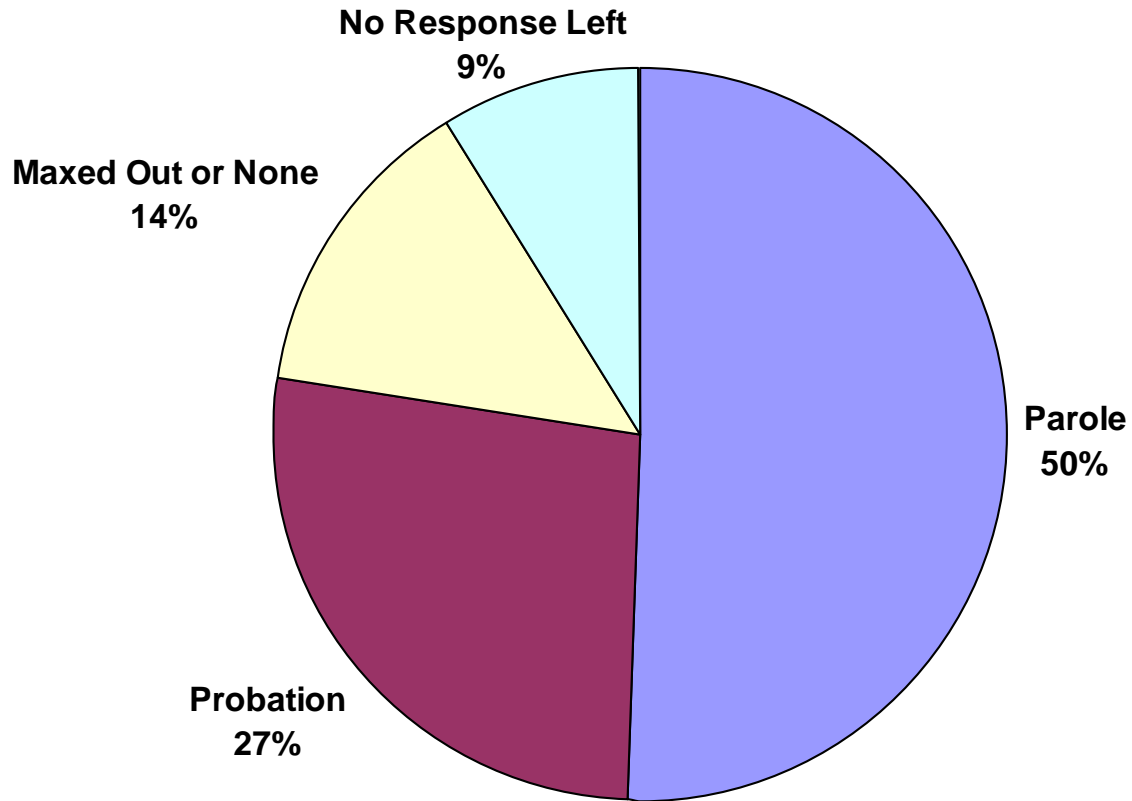
From where the SMART Reentry Sample was Released

N = 222

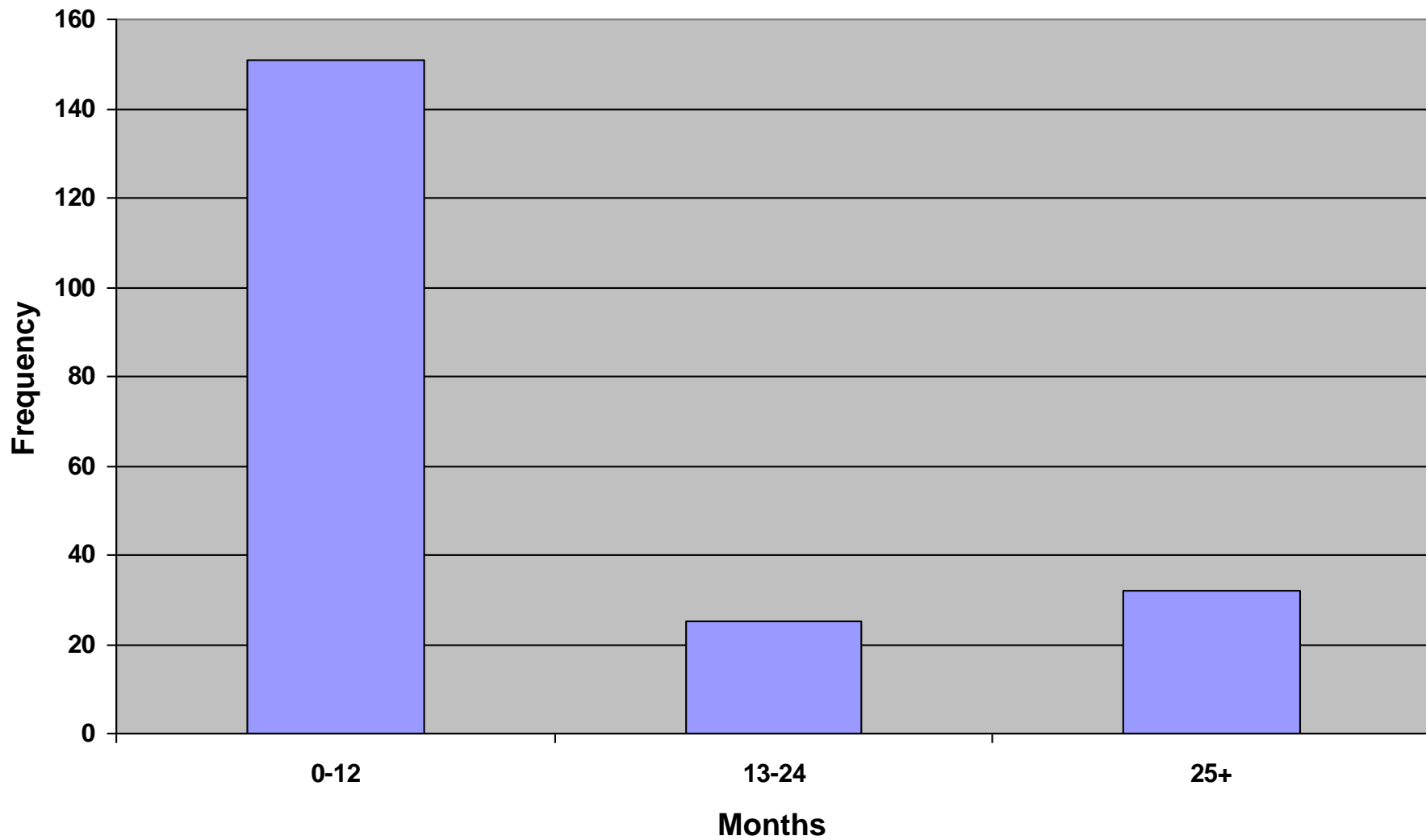


Release Conditions for SMART Reentry Sample

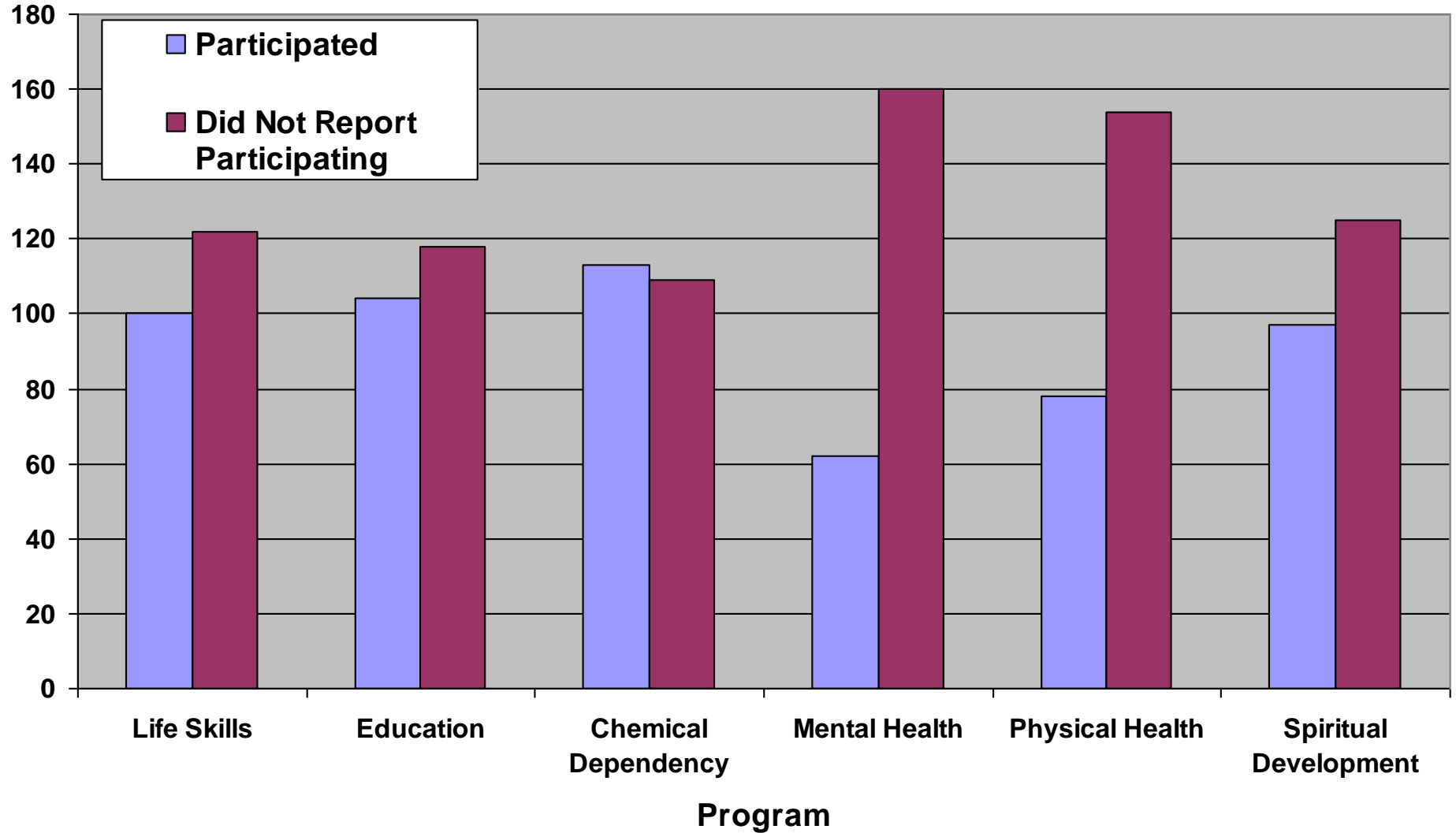
N = 222



Time Since Release for SMART Reentry Sample

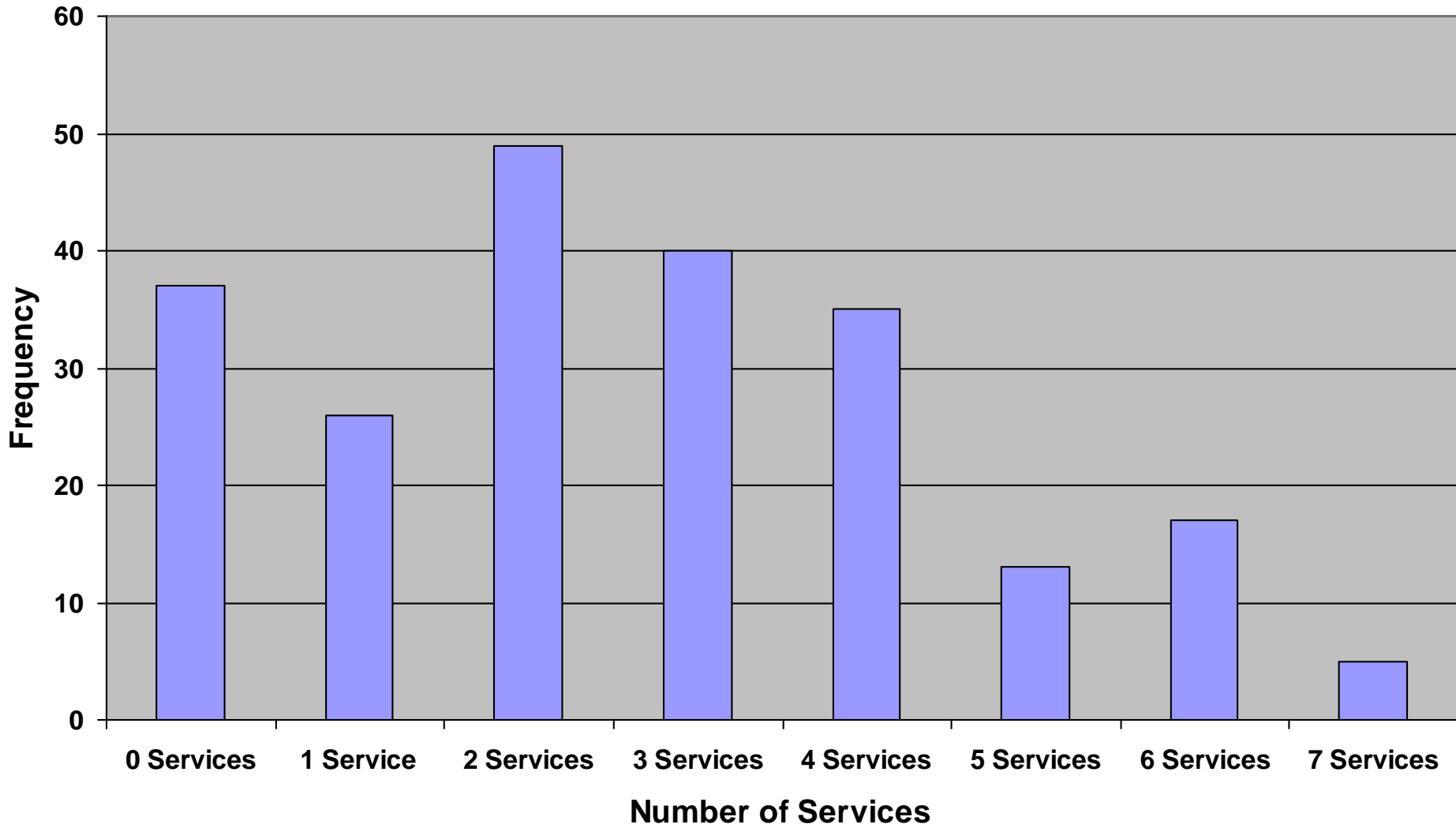


Program Involvement While Incarcerated for the SMART Reentry Sample



Number of Services Participated in While Incarcerated

N = 221

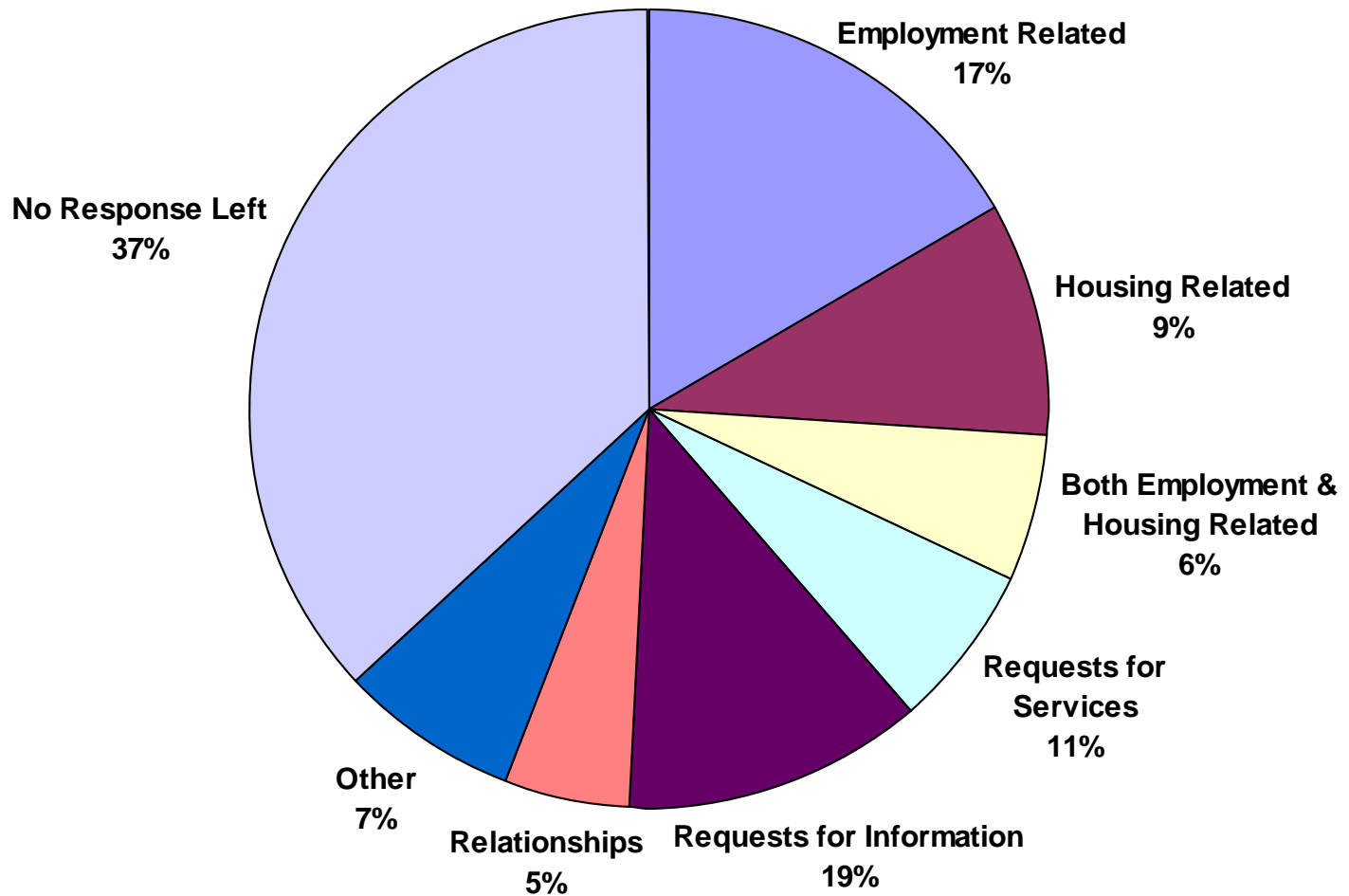


Preparation for Reentry

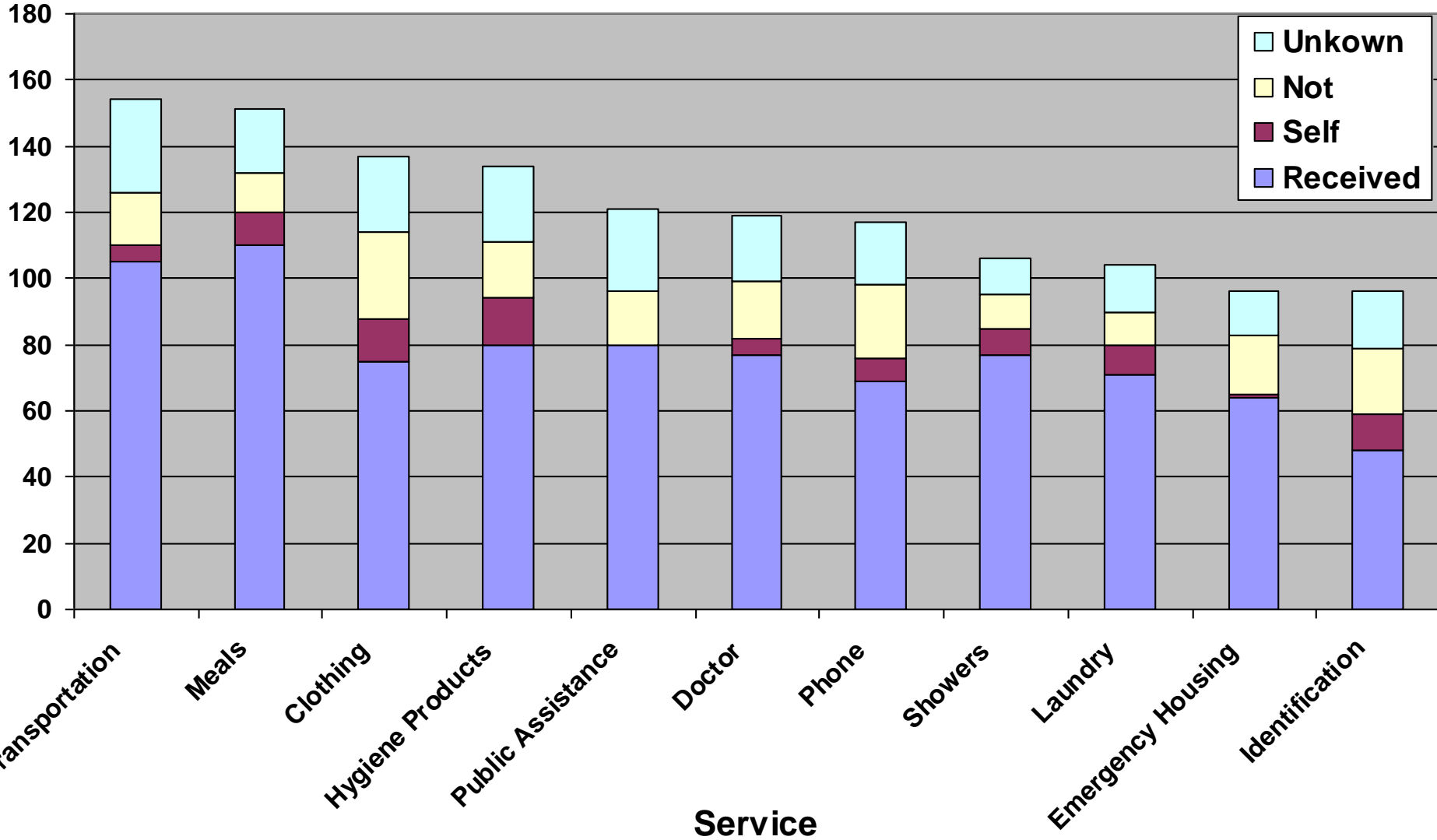
- 59% reported that they spoke to someone about what needed to be done to successfully reenter
- 50.5% reported that they knew they would have a specific service upon release
- 140 reported something that they would have wanted to know upon release

Trends in What Members of the SMART Reentry Sample would have Wanted to Know Prior to Release

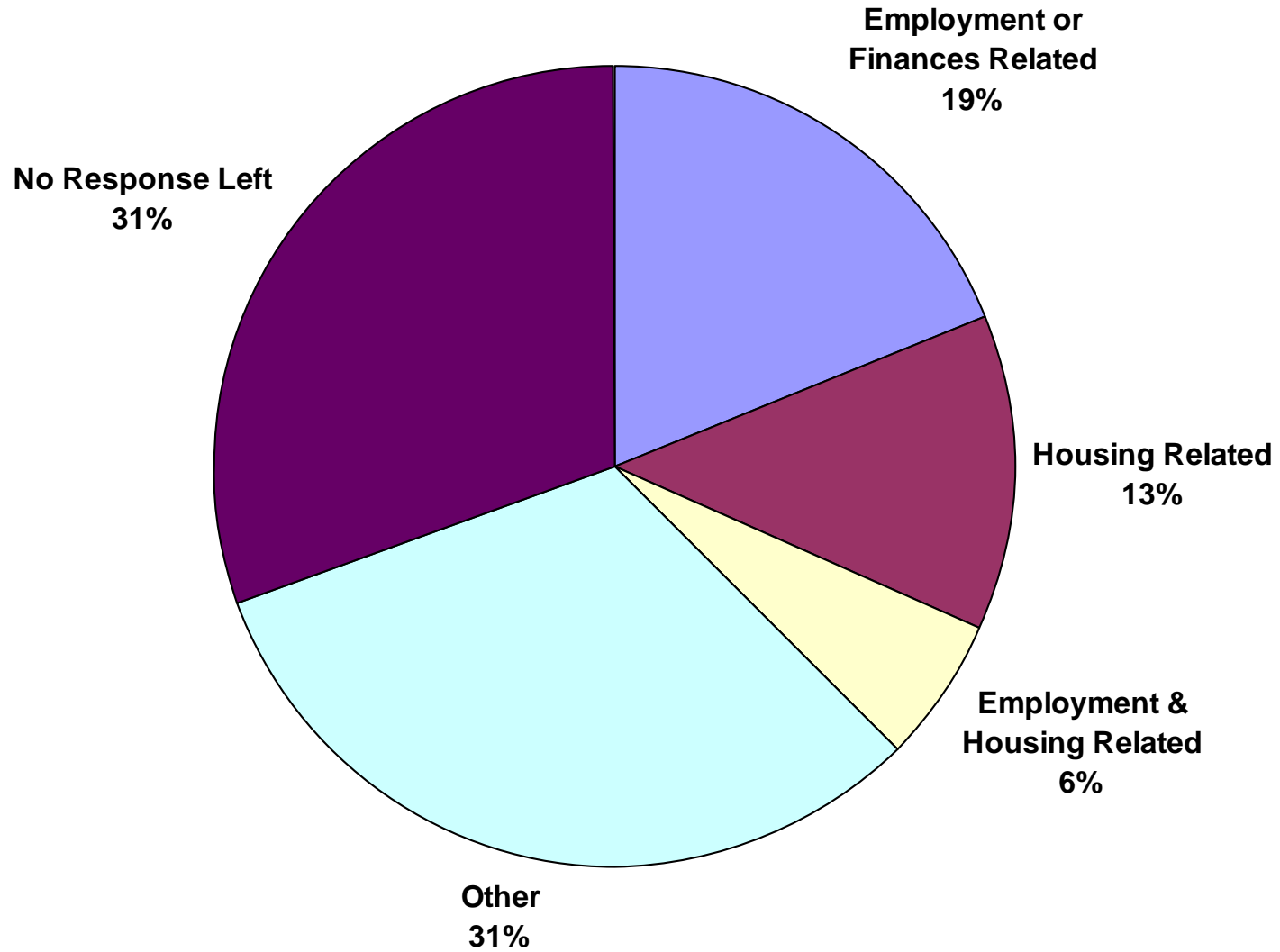
N = 222



Eleven Most Listed 'Most Important Services' 222 Total Survey Respondents



The 'One Most Important Service' Trends for SMART Reentry Sample N = 222

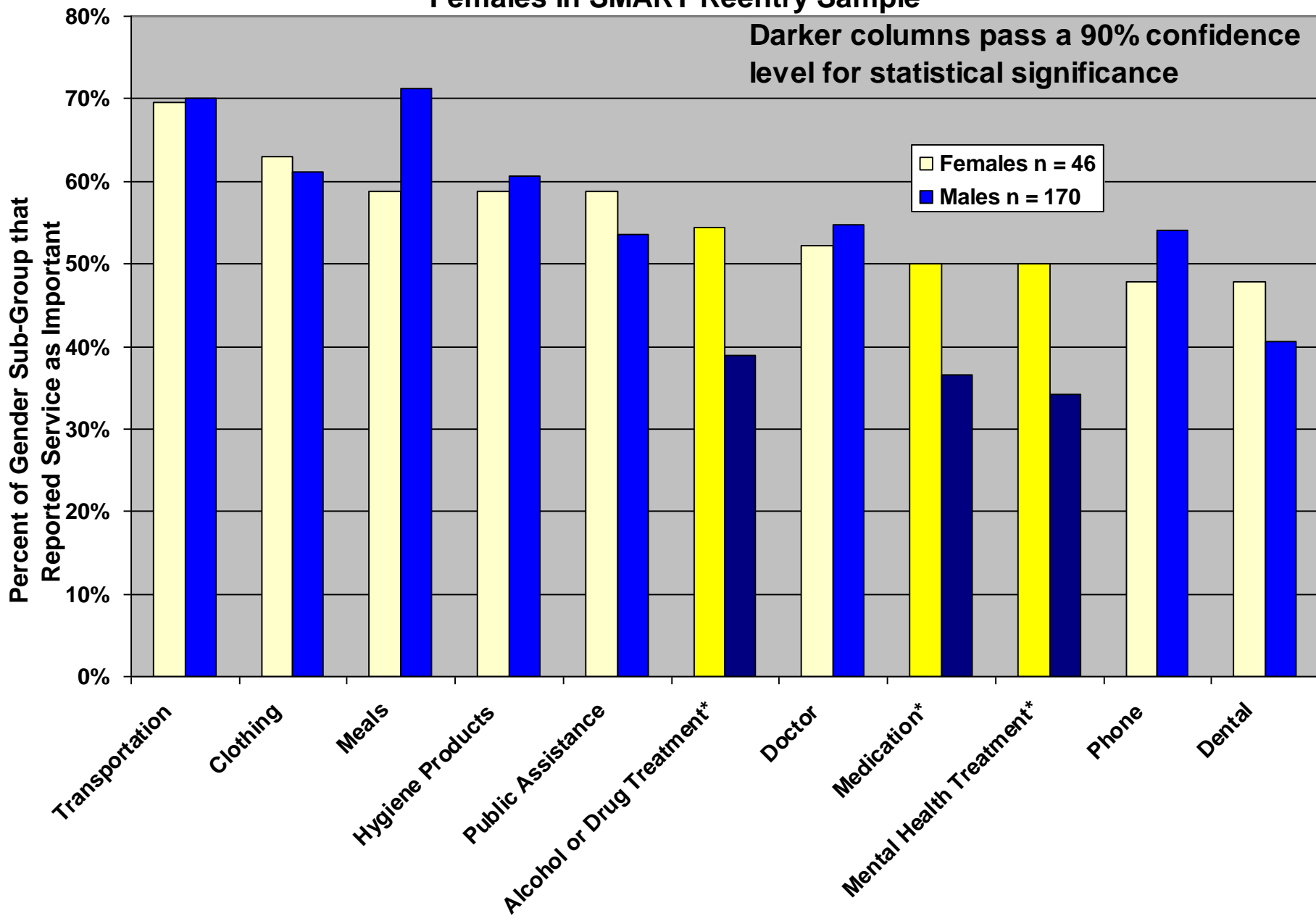


Cross Tabs

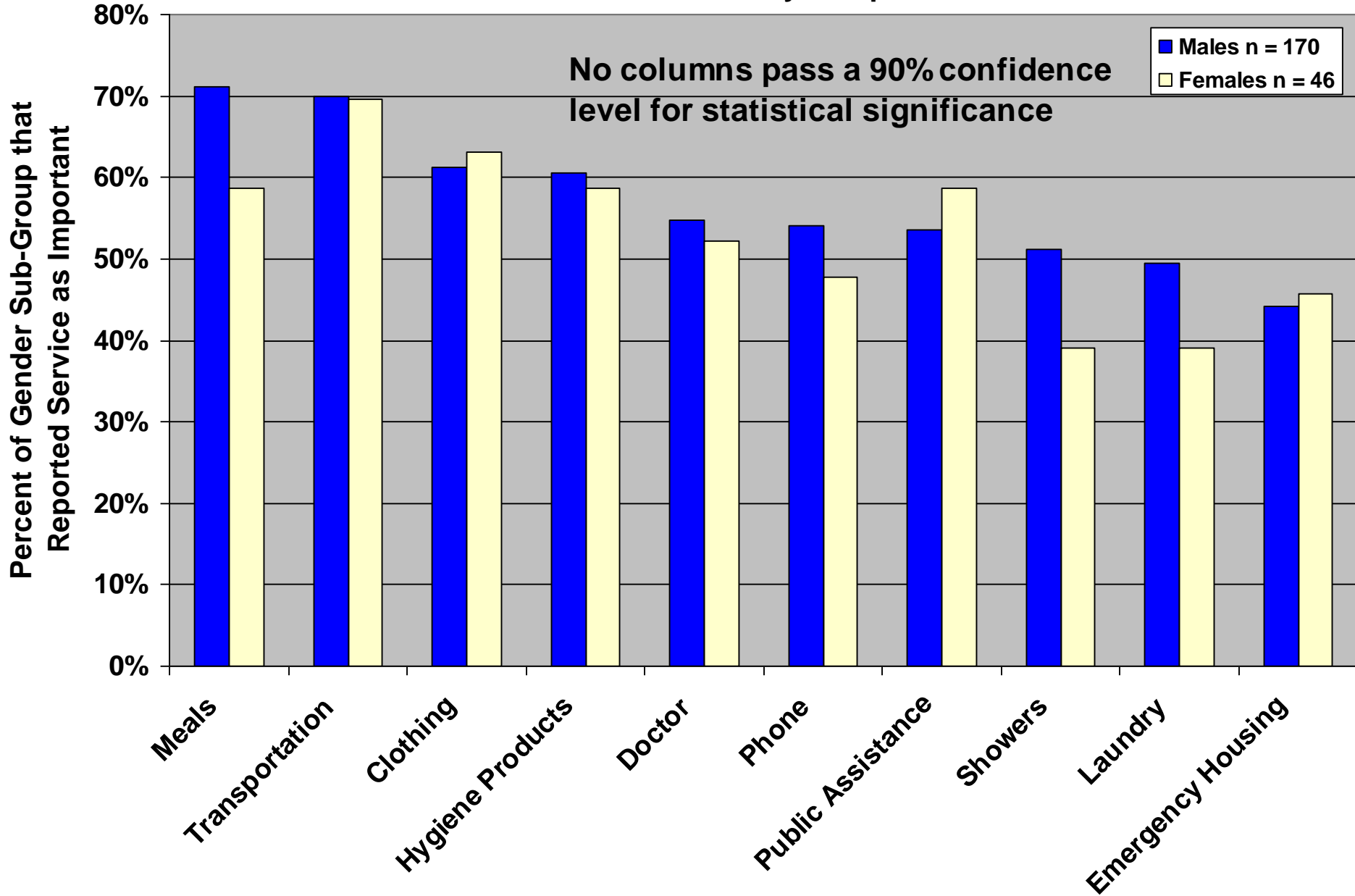
- Gender: Percent that reported service as important (Males; Females)
 - Medication (36.5%; 50%)
 - Alcohol & Drug Treatment (38.8%; 54.3%)
 - Mental Health (34.1%; 50%)
 - Parenting (11.8%; 26.1%)
- All Services
-Rho = 0.92
- Male Top Ten
-Rho = 0.83
- Female Top Ten
-Rho = 0.63

Top Eleven Most Reported Most Important Services for Females in SMART Reentry Sample

Darker columns pass a 90% confidence level for statistical significance



Top Ten Most Reported Most Important Services for Males in SMART Reentry Sample



Cross Tabs Cont.

- Race: Percent that reported service as important (Whites; Non-Whites)
 - Medication (48.4%; 34.6%)
 - Alcohol & Drug Treatment (50%; 37.9%)
 - Health Insurance (40.6%; 22.2%)

All Services

-Rho = 0.93

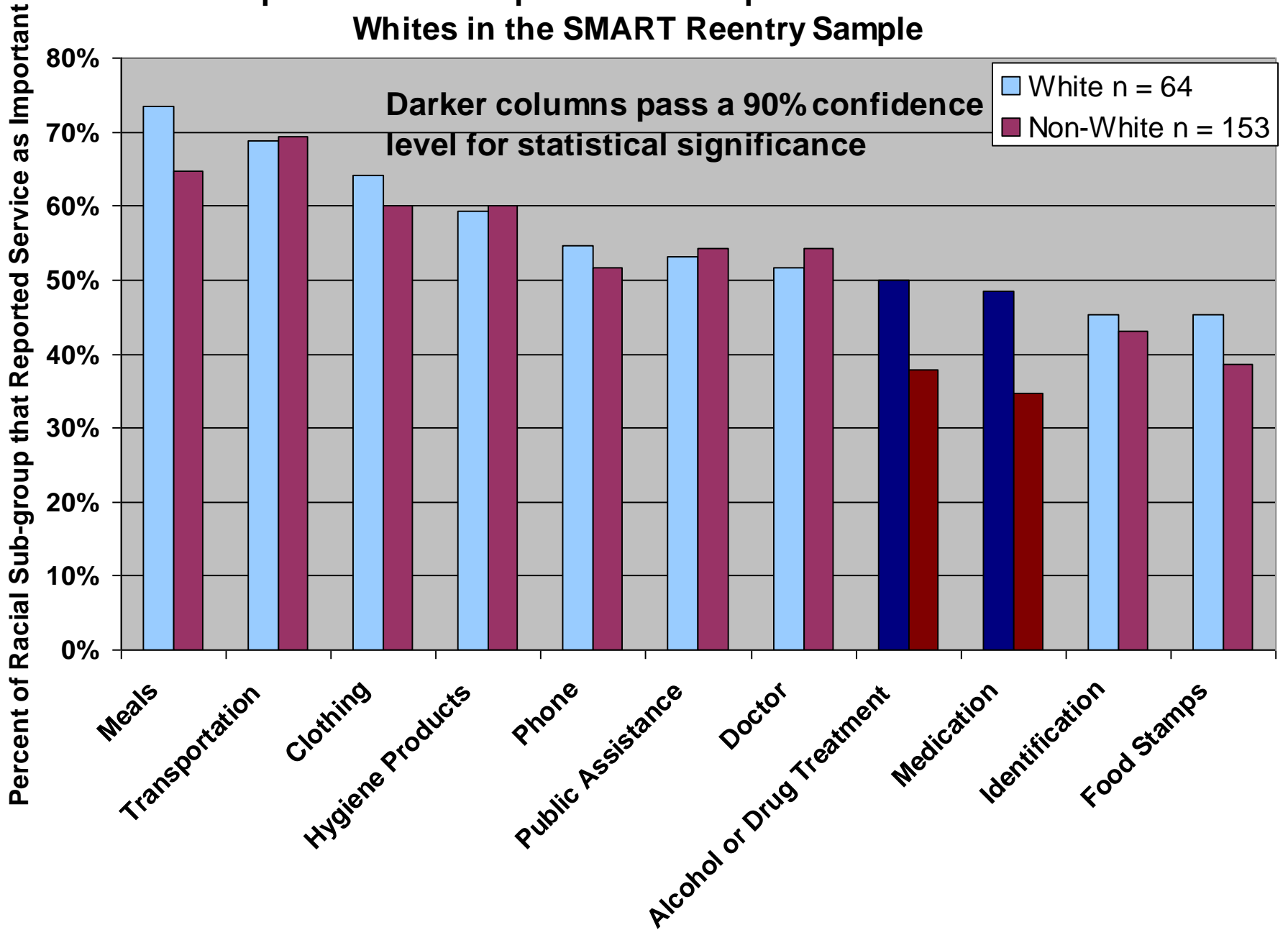
Whites Top Ten

-Rho = 0.82

Non-Whites Top Ten

-Rho = 0.83

Top Eleven Most reported 'Most Important Services' for Whites in the SMART Reentry Sample



Top Eleven Most Reported 'Most Important Services' for Non-Whites in the SMART Reentry Sample

